



45 Families from Rūātoki Valley now connected



Connectivity creates employment



CONNECTED

Learning Online @ Home

KAWERAU



In the Pipeline a tower to service Onepu

Signal coming from TWTOP Kura

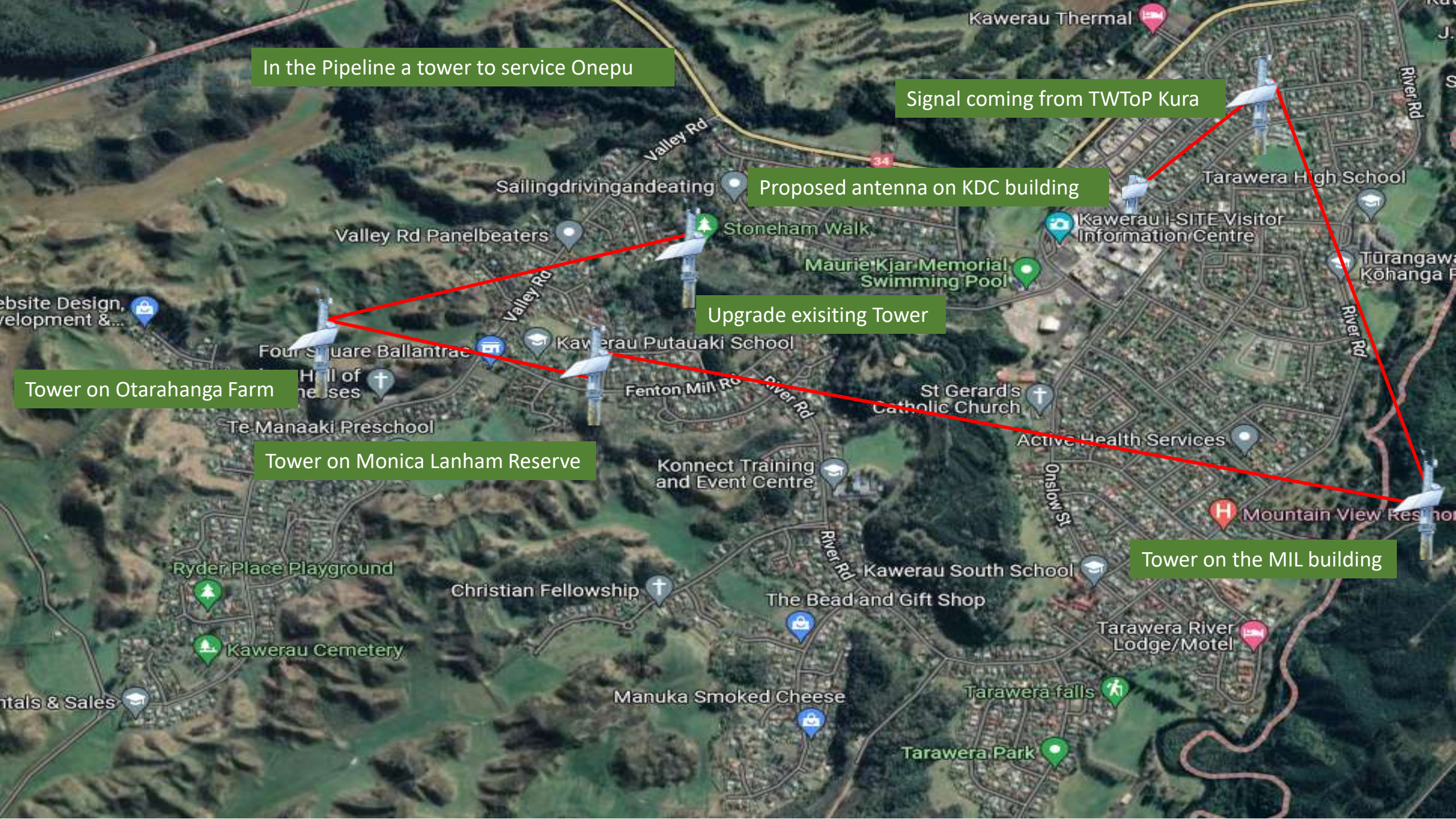
Proposed antenna on KDC building

Upgrade existing Tower

Tower on Otarahanga Farm

Tower on Monica Lanham Reserve

Tower on the MIL building





 **Tuwharetoa mai
Kawerau ki te Tai**



REPORTS & MORE REPORTS!



Home internet access to support learning

We're exploring ways to support students who currently have no home internet access.

Purpose

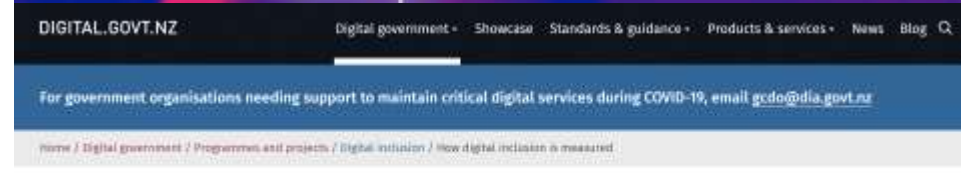
An estimated 145,000 school students in 40,000 households currently don't have a suitable level of internet access at home to support their learning.

- Supporting students
- Managing students
- Health, safety and wellbeing
- Property and school transport
- Schools' planning and reporting
- Funding and financials

By 2032 every rural and remote resident and worker in New Zealand will have the ability to access the connectivity they need

Meeting the needs of people in rural and remote areas

Good connectivity in rural and remote areas is important for productivity and innovation, social connection and community building, health (including mental health) and safety, environmental compliance, and education. Good rural connectivity is also important for attracting and retaining skilled workers.



- Digital inclusion
- What is digital inclusion?
- Government's vision: The Digital Inclusion Blueprint
- How digital inclusion is measured
- Digital inclusion action plans
- Digital inclusion research

How digital inclusion is measured

The Digital Inclusion Outcomes Framework describes how we will measure digital inclusion and its benefits in New Zealand.

The Framework describes the short-, medium- and long-term outcomes we expect from the the work to remove the barriers to digital inclusion.

Digital inclusion action plans

The action plans tell you how Government will work towards making sure all New Zealanders are digitally included in the coming year.

2020 Digital Inclusion Action Plan

The Digital Inclusion Action Plan for 2020 and 2021 builds on the work done in 2019.

2019 Digital Inclusion Action Plan

The 2019 Action Plan identifies the Government's areas of focus in 2019 as it works towards making sure the New Zealand population is digitally included.

ADVOCACY & NETWORKING 2022

- Secured Project Manager funding 2022
- Submitted to Digital Strategy for Aotearoa
- Visits to Wellington to MoE key staff
- Attend TUANZ Rural Connectivity Symposium
- Ministry visit September 2022 - Nick Griffin & Peter Bisley MOE (Equitable Digital Access Project), Deana Rika MOE (Māori team BOP), Colin Holden DIA, Syd Kumar N4L
- Digital Strategy for Aotearoa consultants October 2022 visit - Marg McCleod and John Girven
- Annie McIver, Head Schools Technology Policy Digital Strategy UK
- Media articles in Education Gazette and Te Hauora Taiwhenua

Internet connectivity transforms employment and education in isolated Eastern Bay of Plenty communities

August 8th, 2022

The introduction of internet connectivity in isolated and underprivileged communities across the Eastern Bay of Plenty has boosted employment and provided free access to education and health services for whānau.

Internet connectivity making a meaningful difference to remote communities

By Education Gazette editors

ISSUE: VOLUME 101, NUMBER 12

Share | Print | Email

Posted: 21 September 2022

Reference #: 1HAWTb

Te Aka Toitū Trust works with communities in the Eastern Bay of Plenty to get students connected and engaged in learning online. The trust has worked with provider WiFi Connect and the local community to deliver affordable, high-quality internet to Murupara, Minginui, Ruatāhuna and nearby areas.

▼ [ConnectED Ako: Digital and Data for Learning](#)



Self-taught Robotics Competition Winners
from Te Whata Tau o Putāuaki Kura, Kawerau
Tech Pa National Robotics Scrimmage 2018 & 2020 VEX IQ Nationals

Connecting families results:

2018 - 2022

Number of students 1619

Number of CPEs 359

Number of devices 513

Number of schools/communities 9

Kawerau, Murupara, Waiohau, Te Whaiti,
Minginui, Ngaputahi, Pāpueru, Ruatāhuna,
Rūātoki

2022 connections 87

2022 towers 4



BASIC HUMAN RIGHT
INTERNET
ACCESS FOR ALL



UNITED NATIONS

“Internet access should be considered a universal entitlement because it is necessary for people to be able to lead minimally decent lives...”

“Now is the time to renew the social contract between governments and their people and within societies,” he said. “[The contract should] include updated governance arrangements to deliver better public goods and usher in a new era of universal social protection, health coverage, education, skills, decent work and housing, as well as universal access to the internet by 2030 as a basic human right.”
[15 July 2022](#) - United Nations Secretary-General António Guterres

**COVID 19 has shown us we need
Universal Basic Internet now!**

Working together to help the last 2%

WORK AND INCOME
TE HIRANGA TANGATA

COVID-19 support

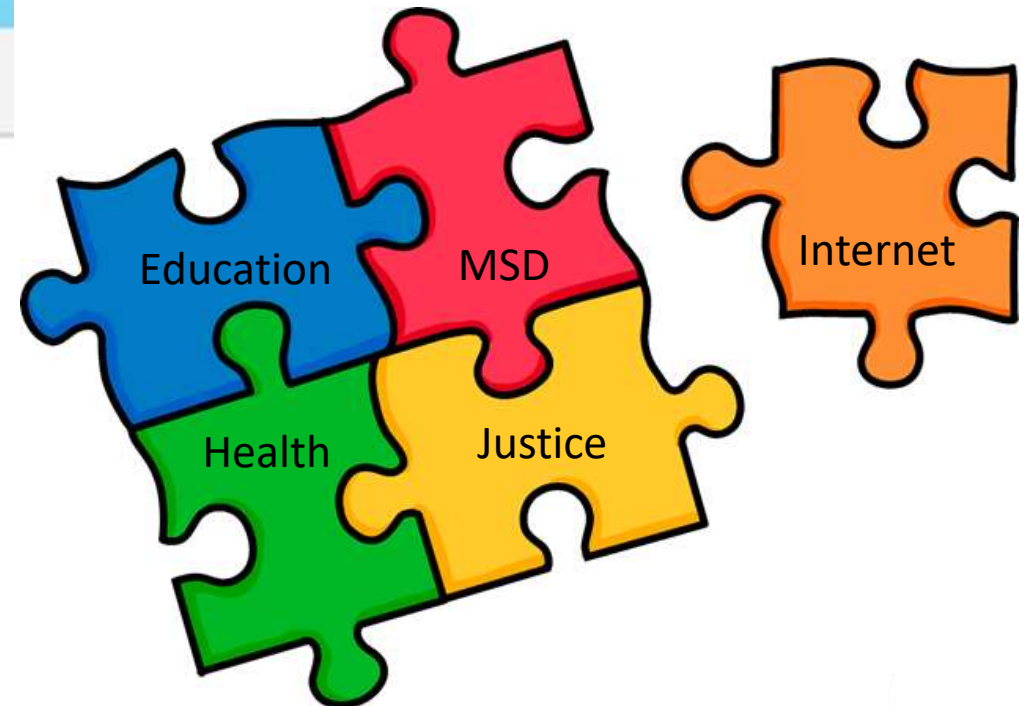
Work ▾ Benefits and payments ▾ On a benefit ▾ Housing ▾

Home / Benefits and payments / Living expenses / Power, gas, water bills or heating

What can I apply for at Winz?

- Accommodation.
- Power, gas and water bills or heating.
- Medical costs.
- House repairs and maintenance.

Work and Income
<https://www.workandincome.govt.nz> › online-services ▾





Iwi “bandwidth” spectrum initiative

- Iwi purchase 3 years worth of ‘bandwidth’
- Approx \$20k per year to service multiple households and marae
- Whānau sign up to iwi group ISP and receive free unlimited connectivity
- A valued ‘tangible plus’ to iwi beneficiaries
- Improves iwi and beneficiary connectivity
- Iwi have allocated bandwidth for TV and radio from government – why not data?

Its not just that our our communities need to be heard, they deserve to be connected...



Thank you