

# Rural Connectivity Symposium Event

**Sharina Nisha**

Head of Network Services

**One New Zealand**

# Cyclone Gabrielle was the costliest tropical cyclone on record for the Southern Hemisphere



**>225,000** homes  
lost power



**~10,000** residents  
were displaced



**365** claims of injuries  
were accepted by ACC



**6,960** reports of  
uncontactable  
residents



**11** fatalities as a result  
of the cyclone



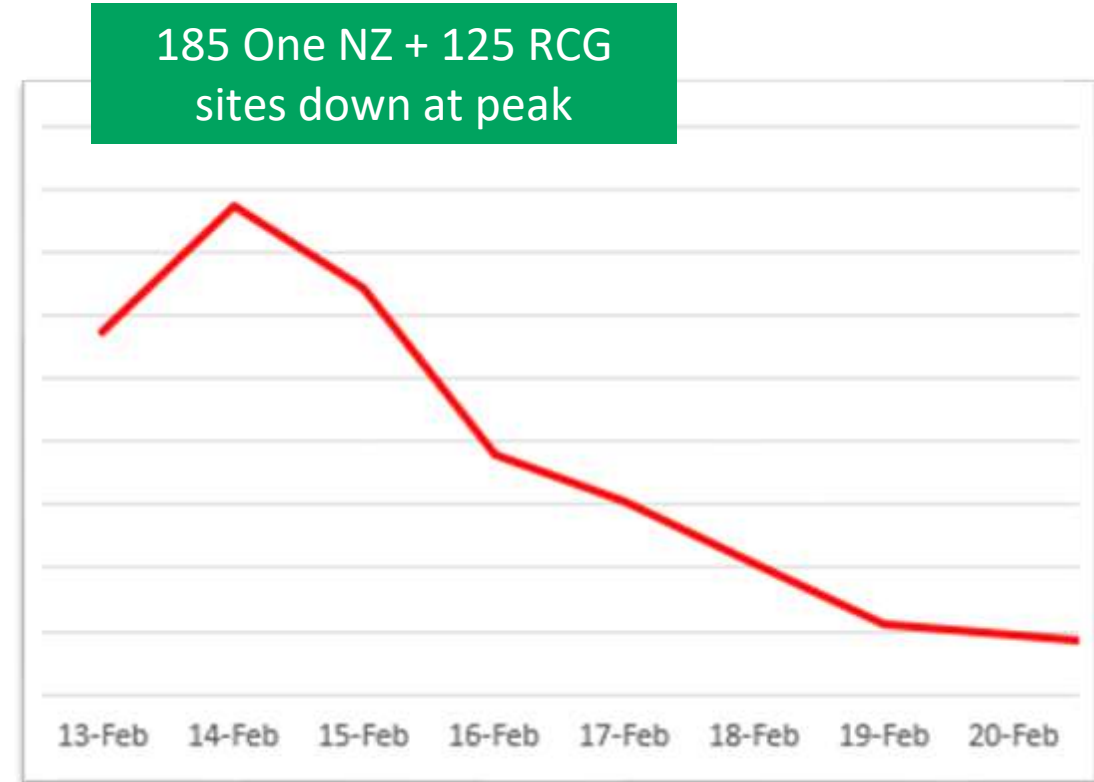
# Cyclone Gabrielle impacted all telco services...

## One NZ Impact

- 185 One NZ sites & 125 RCG sites down

## Crisis Management initiated:

1. Pre deployment of generators & resources
2. Power & Backhaul Restoration
3. Portable Coverage deployment
4. Proactive Customer support
5. Joint Industry response



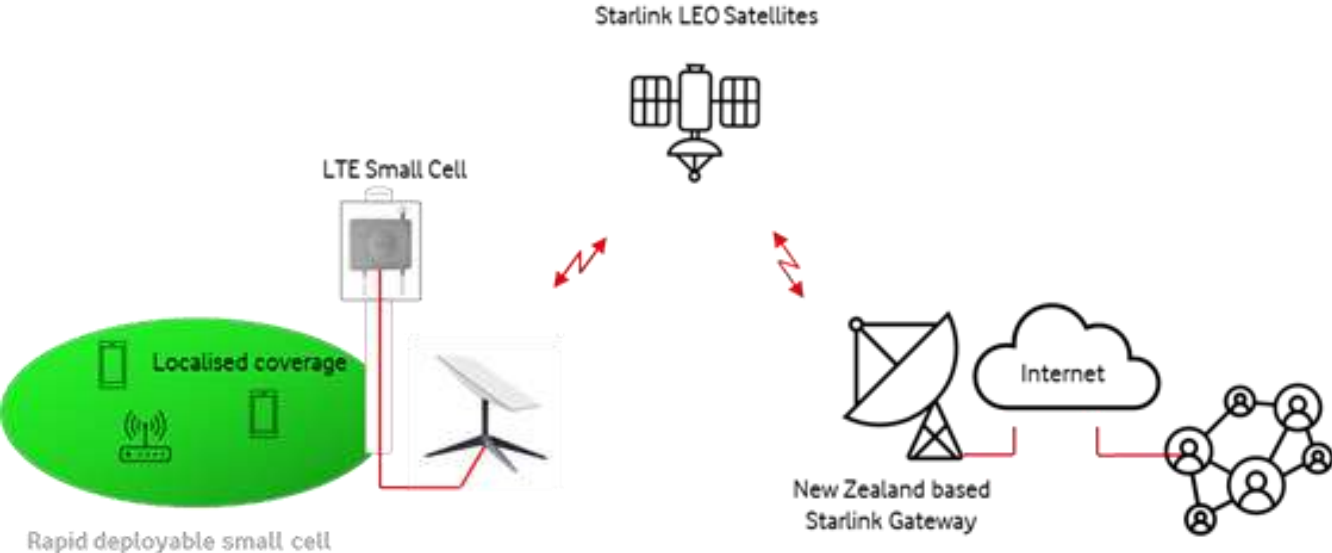
- 50% restored in 48 Hours
- 73% restored in 72 hours
- 98% restored in 7 days



# 80% power and 20% fibre backhaul outages



# Portable Innovative Coverage Solutions deployed



# Cyclone Gabrielle Response



# Cyclone Gabrielle Response



People gravitated to the emergency coverage zones



Mobile connectivity at Gisborne Airport enabled re-fuelling of the planes again!



Getting Matawai school connected



Coverage for Emergency Services



# Key Learnings

Feeding into Cyclone Enquiry and TCF

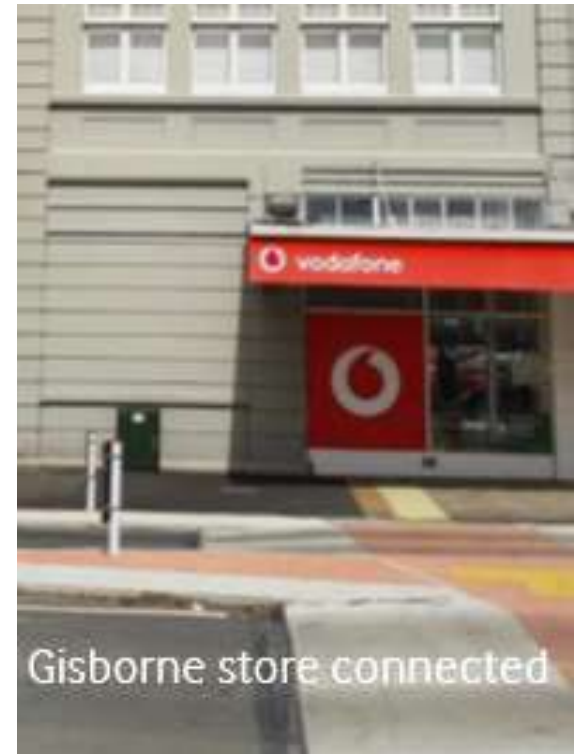
1. Emergency Access & Liaison

2. Power & Backhaul Resilience

3. Industry Feedback



Small Cells set up team



Gisborne store connected





**Thank you**