



TUANZ Connecting Aotearoa Summit 2026

Ian Hooker - CEO Rural Connectivity Group

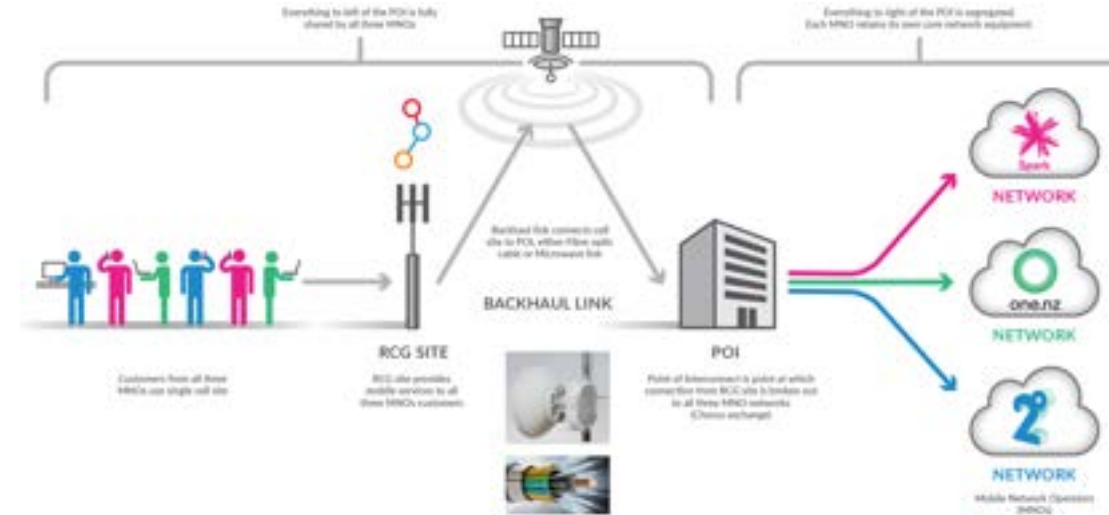
Contents



- RCG background
- What have we delivered
- What else, what's to come

RCG background (recap)

- RCG is a joint venture between Spark, One NZ and 2degrees
- Appointed by the Crown to deliver the Rural Broadband Initiative 2 program:
 - Internet access to identified homes (EEUs)
 - Mobile Blackspots – SHW blackspot coverage
 - Tourist hotspots
- Joint government and MNO funding
- Shared RAN
 - Sites provide service to everyone, regardless of network provider
 - Spark, One NZ, 2D

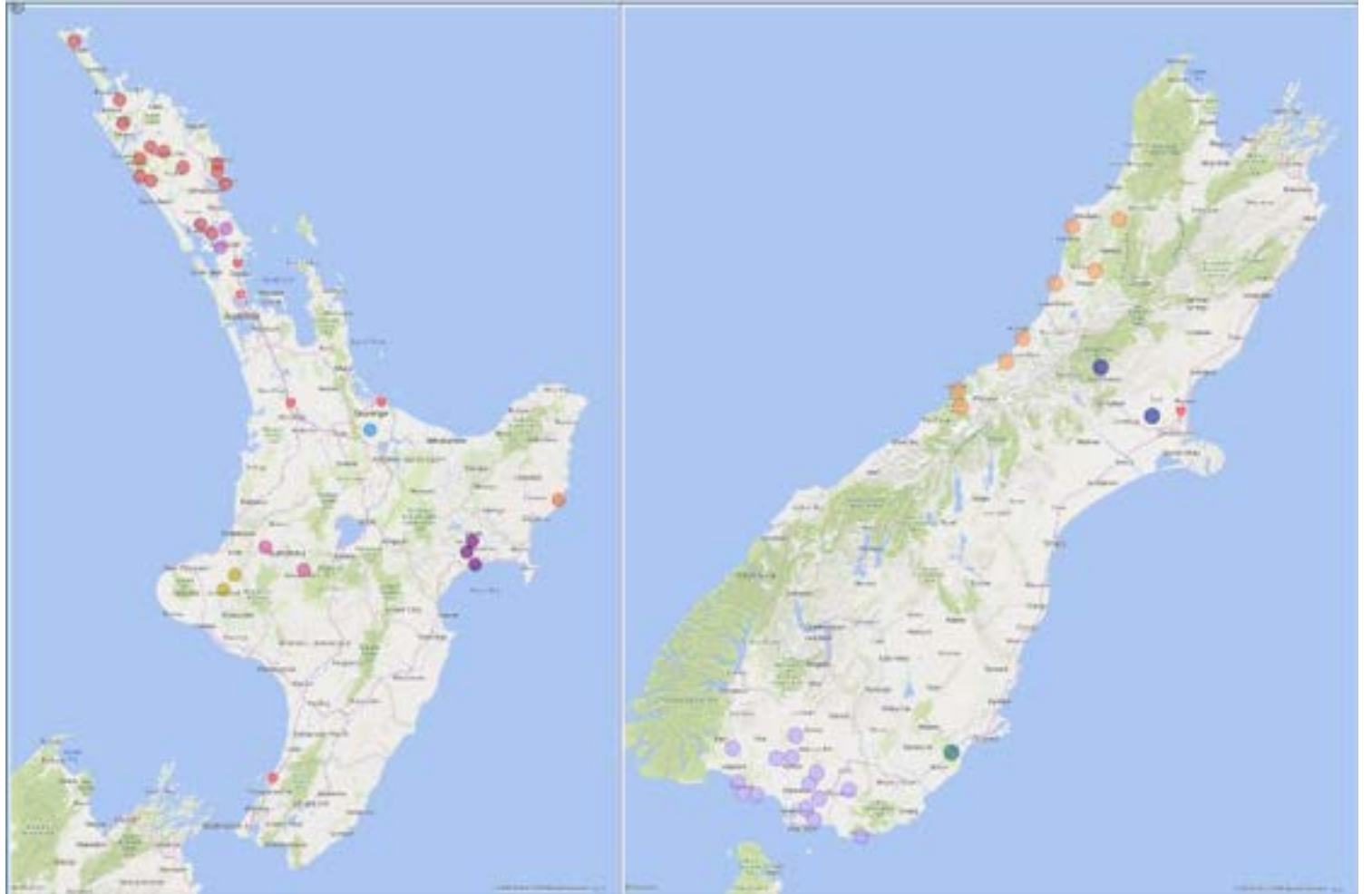


Co-siting Co-location Shared Radios (MOCN)

Site details

- 590 sites live
 - Voice, Data, Text, IOT, Cell Broadcast
- RCG scope from site acquisition to ongoing operations
 - SAQ, design, build, operate
- Leases
 - Private land, NZTA, DOC, Council / Local authority
- Power
 - Mains supply
 - Off grid (70+)
- Backhaul
 - Microwave
 - Managed fibre
 - Dark fibre
 - LEO satellite

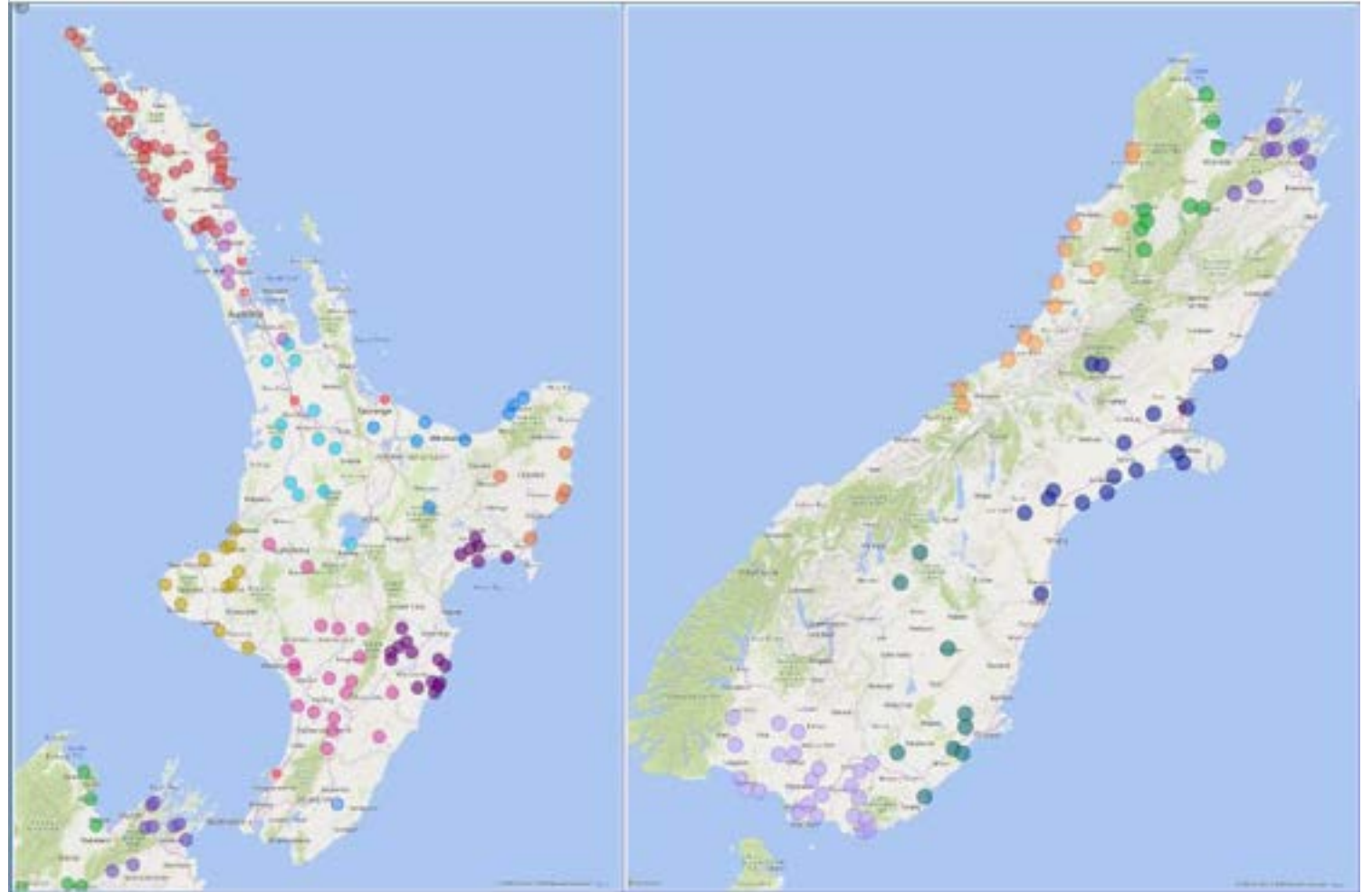
Sites live - 2019



Site details

- 590 sites live
 - Voice, Data, Text, IOT, Cell Broadcast
- RCG scope from site acquisition to ongoing operations
 - SAQ, design, build, operate
- Leases
 - Private land, NZTA, DOC, Council / Local authority
- Power
 - Mains supply
 - Off grid (70+)
- Backhaul
 - Microwave
 - Managed fibre
 - Dark fibre
 - LEO satellite

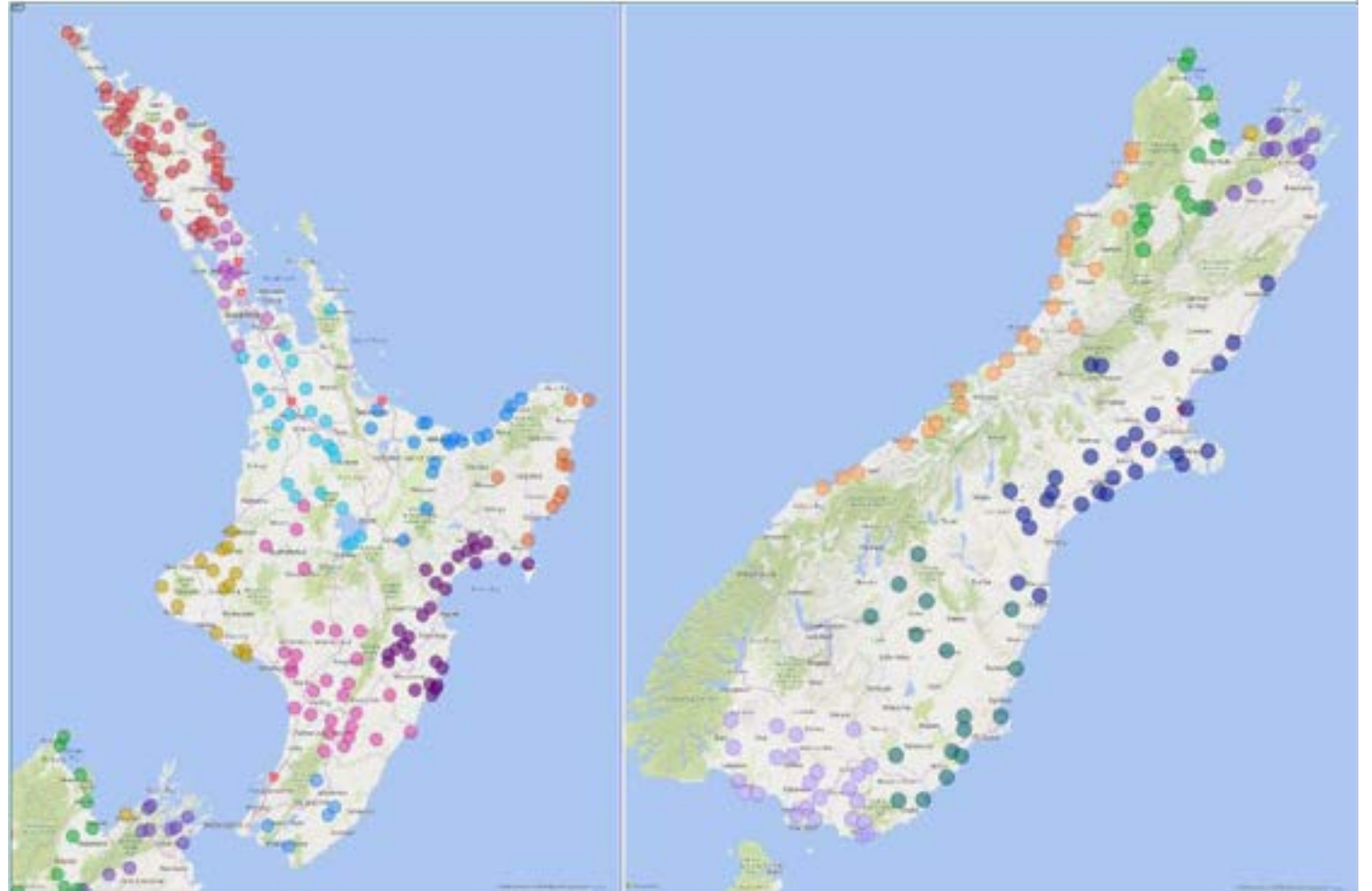
Sites live - 2020



Site details

- 590 sites live
 - Voice, Data, Text, IOT, Cell Broadcast
- RCG scope from site acquisition to ongoing operations
 - SAQ, design, build, operate
- Leases
 - Private land, NZTA, DOC, Council / Local authority
- Power
 - Mains supply
 - Off grid (70+)
- Backhaul
 - Microwave
 - Managed fibre
 - Dark fibre
 - LEO satellite

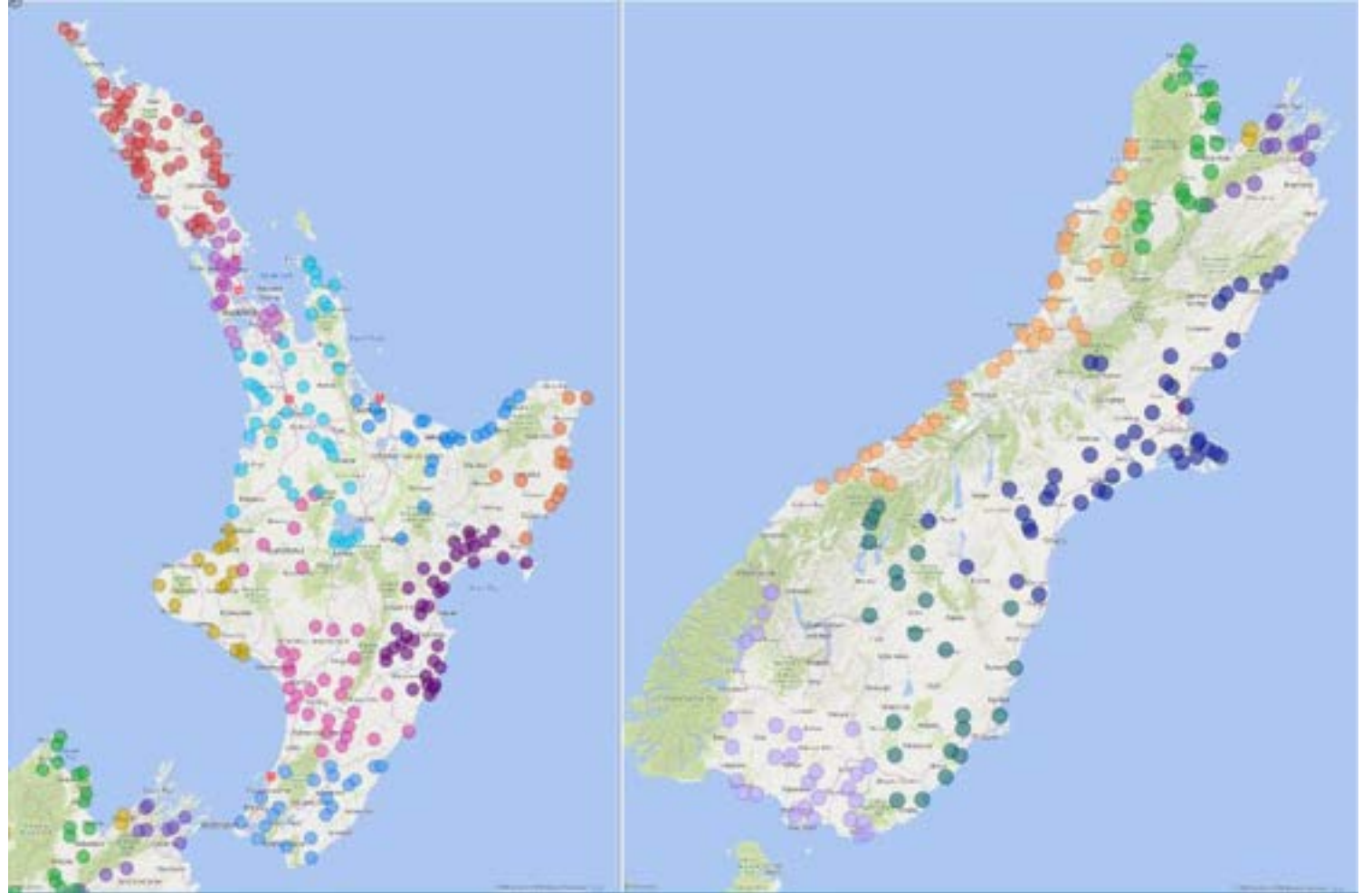
Sites live - 2021



Site details

- 590 sites live
 - Voice, Data, Text, IOT, Cell Broadcast
- RCG scope from site acquisition to ongoing operations
 - SAQ, design, build, operate
- Leases
 - Private land, NZTA, DOC, Council / Local authority
- Power
 - Mains supply
 - Off grid (70+)
- Backhaul
 - Microwave
 - Managed fibre
 - Dark fibre
 - LEO satellite

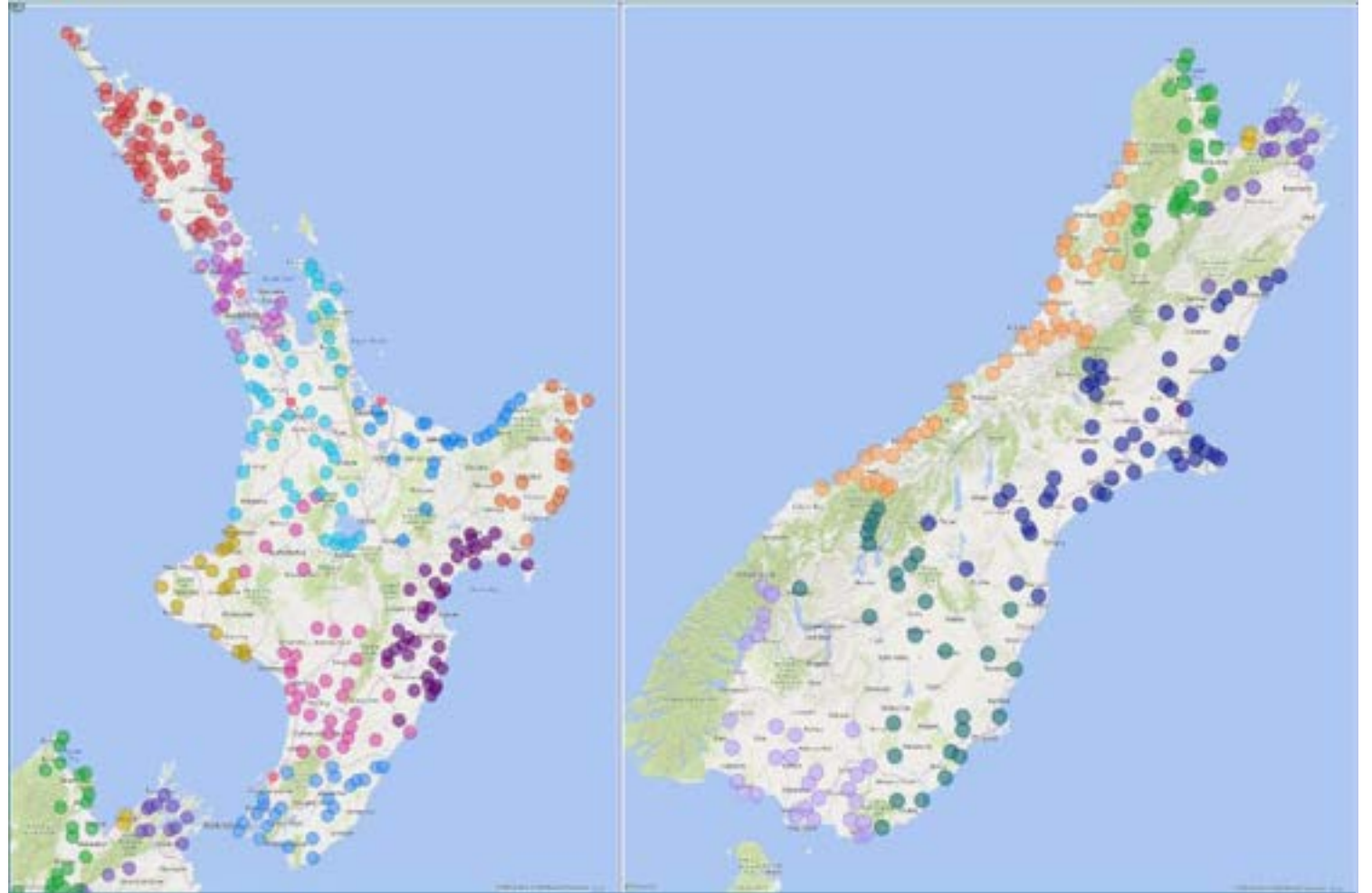
Sites live - 2022



Site details

- 590 sites live
 - Voice, Data, Text, IOT, Cell Broadcast
- RCG scope from site acquisition to ongoing operations
 - SAQ, design, build, operate
- Leases
 - Private land, NZTA, DOC, Council / Local authority
- Power
 - Mains supply
 - Off grid (70+)
- Backhaul
 - Microwave
 - Managed fibre
 - Dark fibre
 - LEO satellite

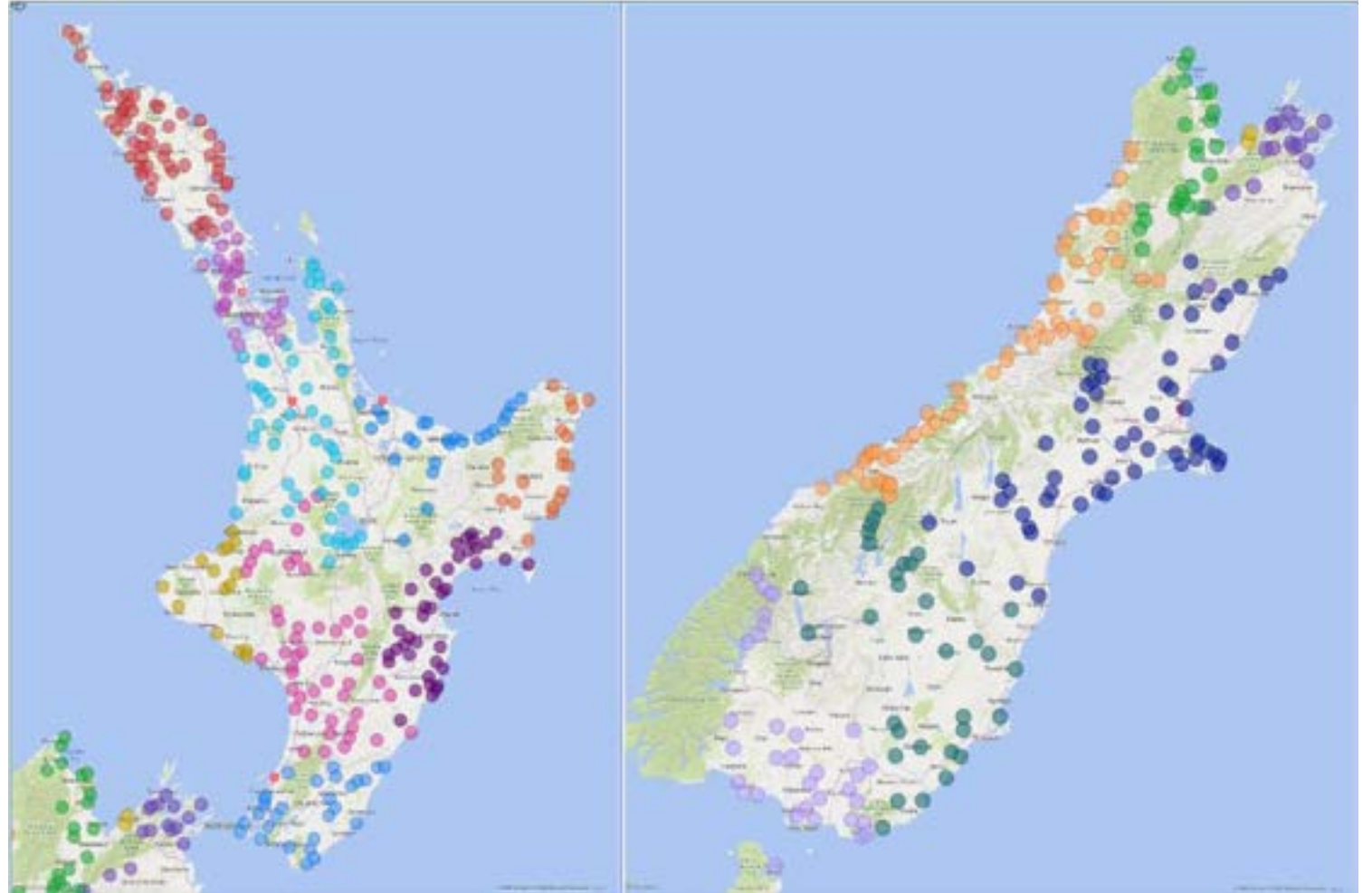
Sites live - 2023



Site details

- 590 sites live
 - Voice, Data, Text, IOT, Cell Broadcast
- RCG scope from site acquisition to ongoing operations
 - SAQ, design, build, operate
- Leases
 - Private land, NZTA, DOC, Council / Local authority
- Power
 - Mains supply
 - Off grid (70+)
- Backhaul
 - Microwave
 - Managed fibre
 - Dark fibre
 - LEO satellite

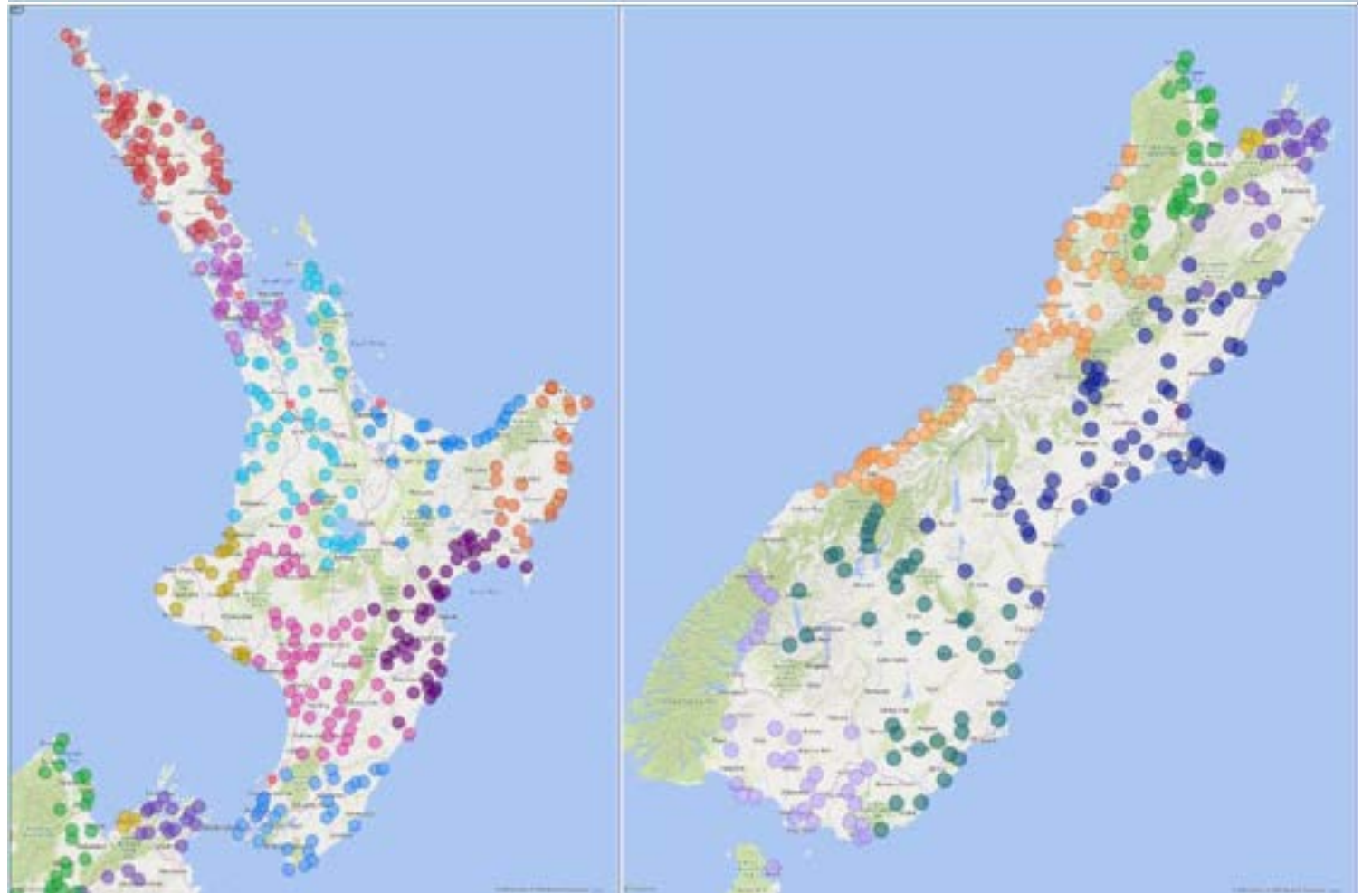
Sites live - 2024



Site details

- 590 sites live
 - Voice, Data, Text, IOT, Cell Broadcast
- RCG scope from site acquisition to ongoing operations
 - SAQ, design, build, operate
- Leases
 - Private land, NZTA, DOC, Council / Local authority
- Power
 - Mains supply
 - Off grid (70+)
- Backhaul
 - Microwave
 - Managed fibre
 - Dark fibre
 - LEO satellite

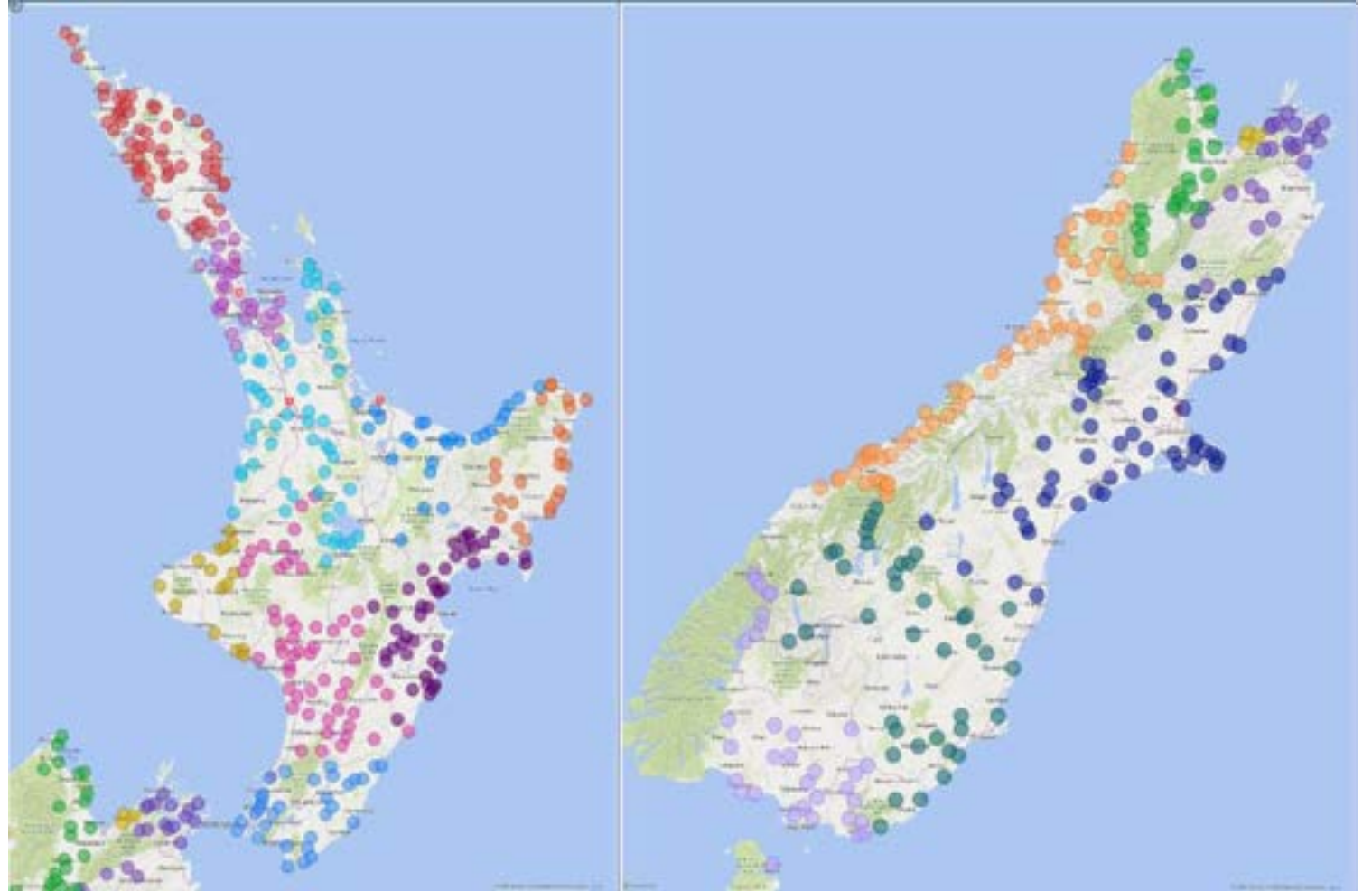
Sites live - 2025



Site details

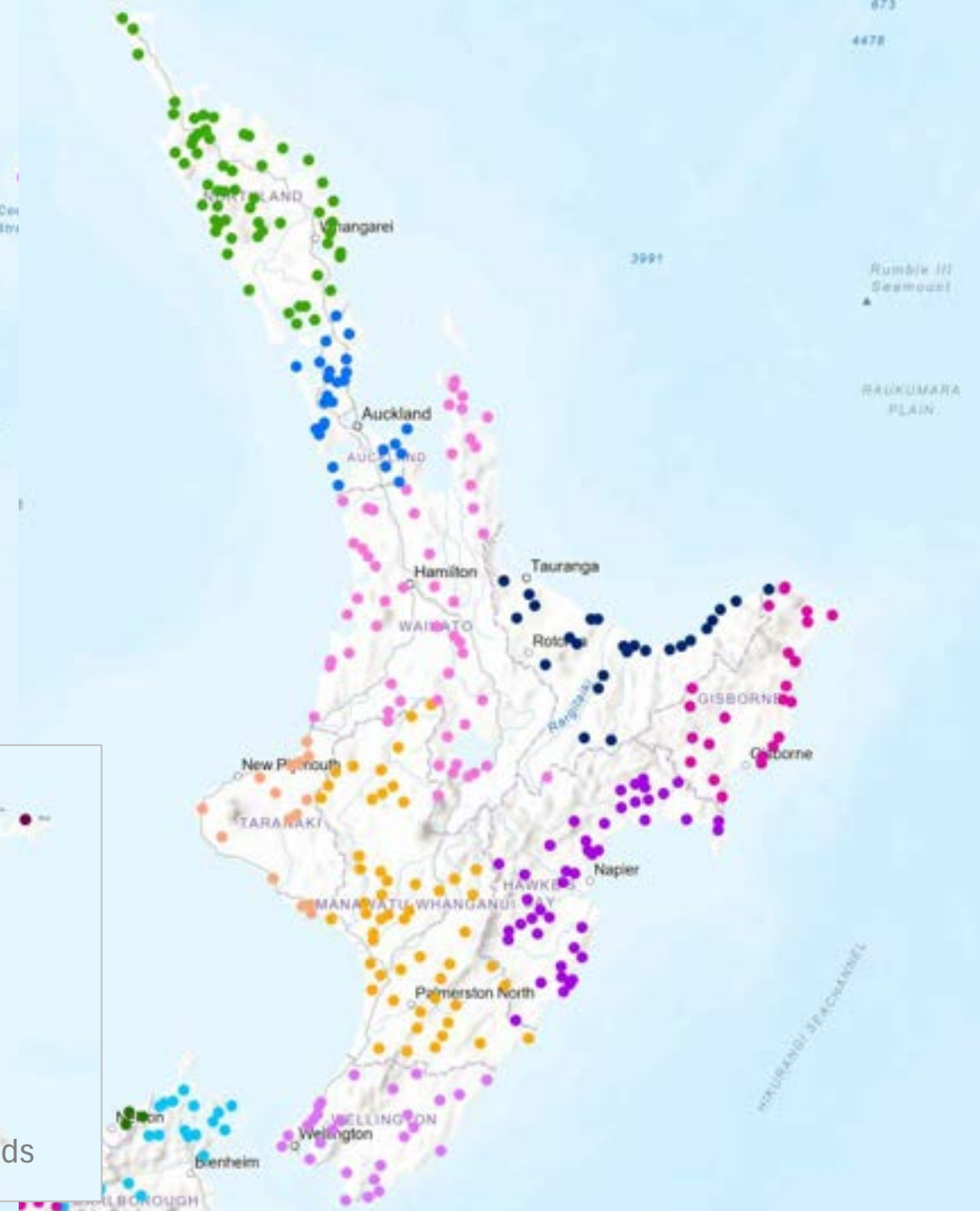
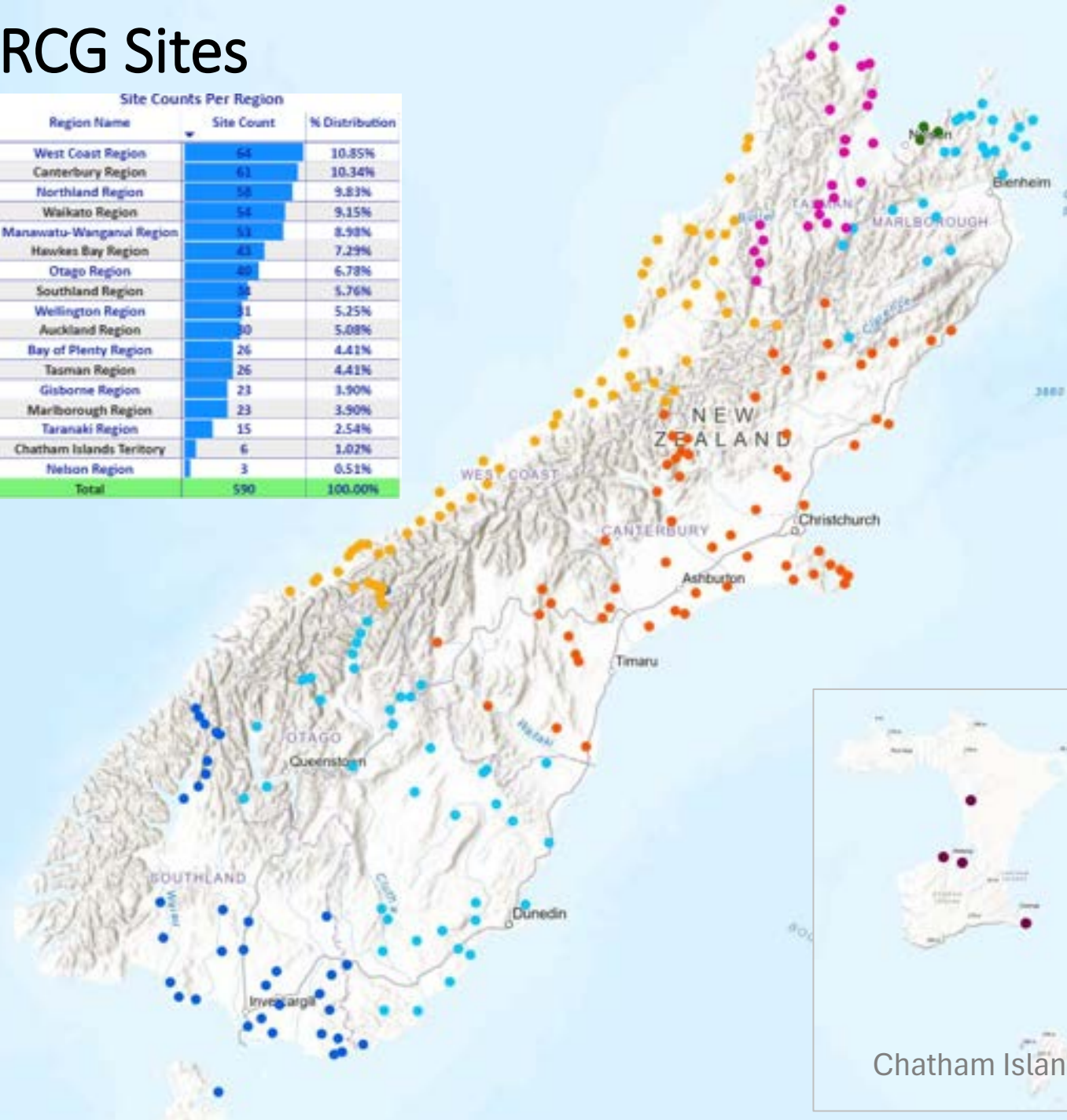
- 590 sites live
 - Voice, Data, Text, IOT, Cell Broadcast
- RCG scope from site acquisition to ongoing operations
 - SAQ, design, build, operate
- Leases
 - Private land, NZTA, DOC, Council / Local authority
- Power
 - Mains supply
 - Off grid (70+)
- Backhaul
 - Microwave
 - Managed fibre
 - Dark fibre
 - LEO satellite

Sites live - 2026



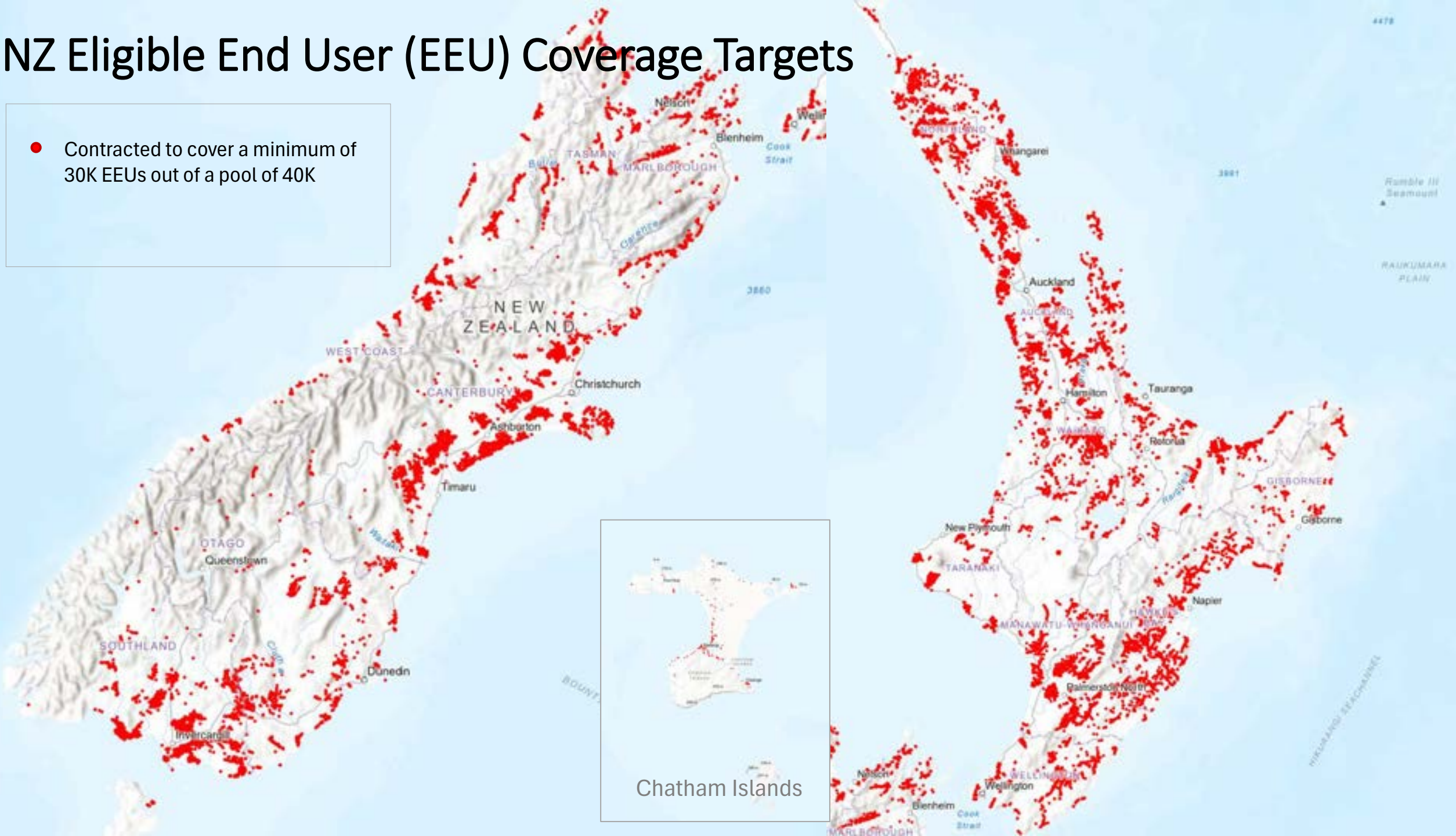
RCG Sites

Site Counts Per Region		
Region Name	Site Count	% Distribution
West Coast Region	64	10.85%
Canterbury Region	61	10.34%
Northland Region	58	9.83%
Waikato Region	54	9.15%
Manawatu-Wanganui Region	53	8.98%
Hawkes Bay Region	43	7.29%
Otago Region	40	6.78%
Southland Region	34	5.76%
Wellington Region	31	5.25%
Auckland Region	30	5.08%
Bay of Plenty Region	26	4.41%
Tasman Region	26	4.41%
Gisborne Region	23	3.90%
Marlborough Region	23	3.90%
Taranaki Region	15	2.54%
Chatham Islands Territory	6	1.02%
Nelson Region	3	0.51%
Total	590	100.00%



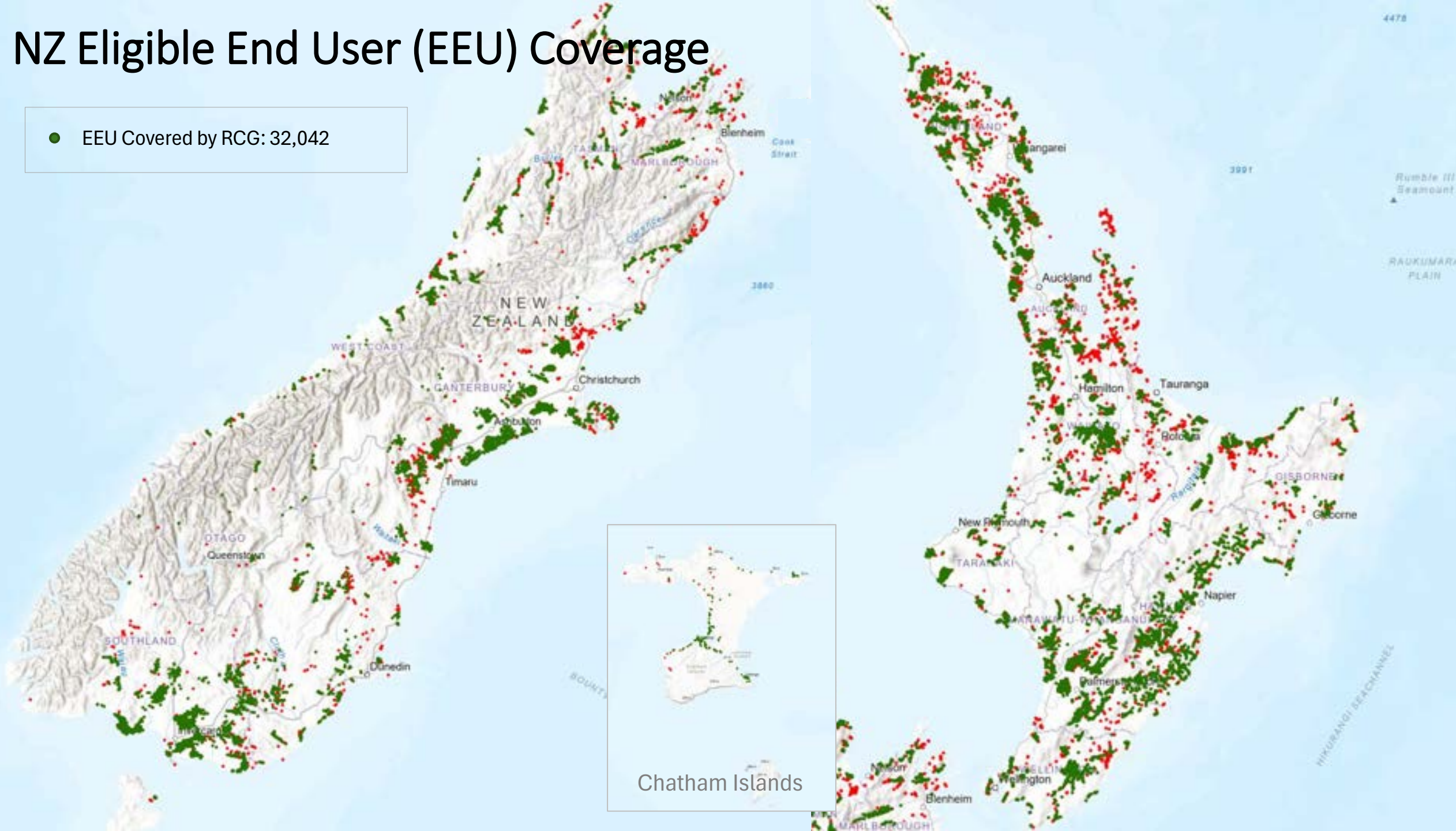
NZ Eligible End User (EEU) Coverage Targets

● Contracted to cover a minimum of 30K EEU's out of a pool of 40K



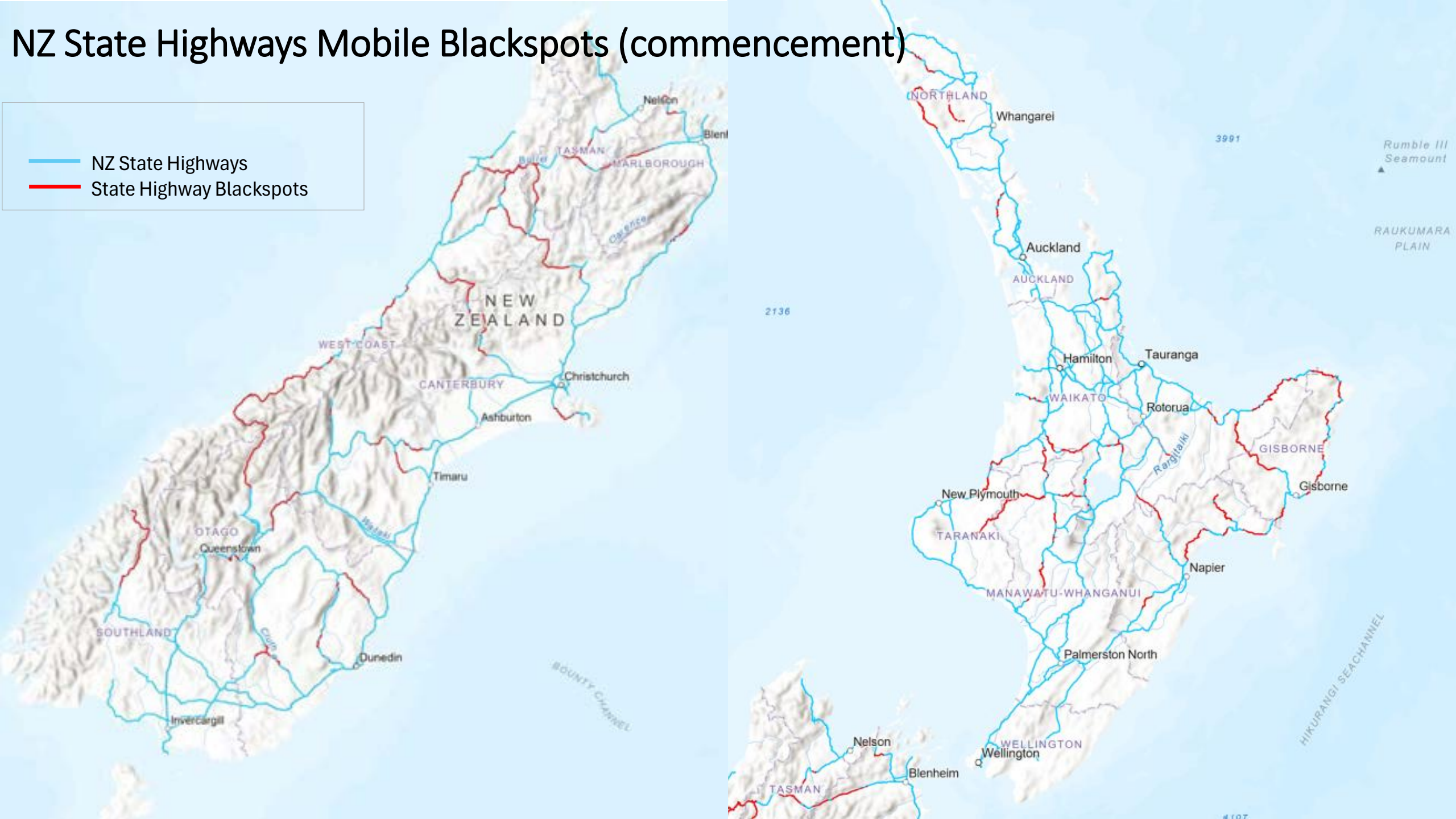
NZ Eligible End User (EEU) Coverage

● EEU Covered by RCG: 32,042

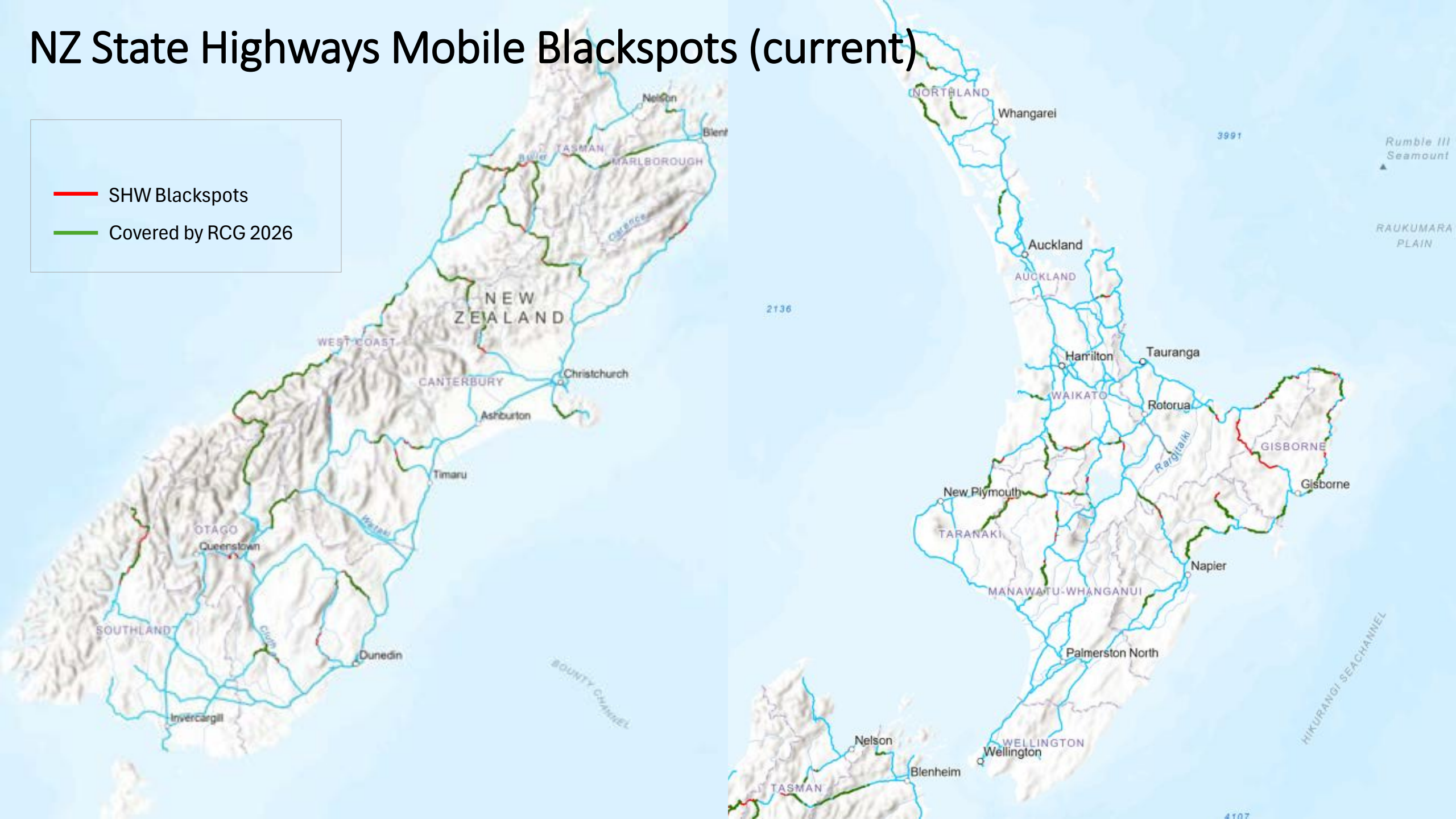
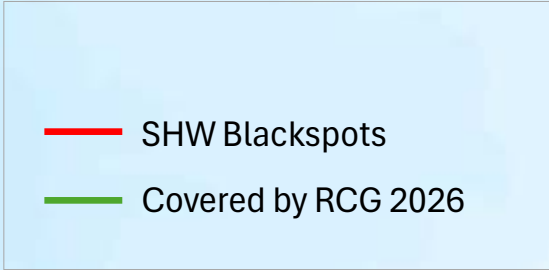


NZ State Highways Mobile Blackspots (commencement)

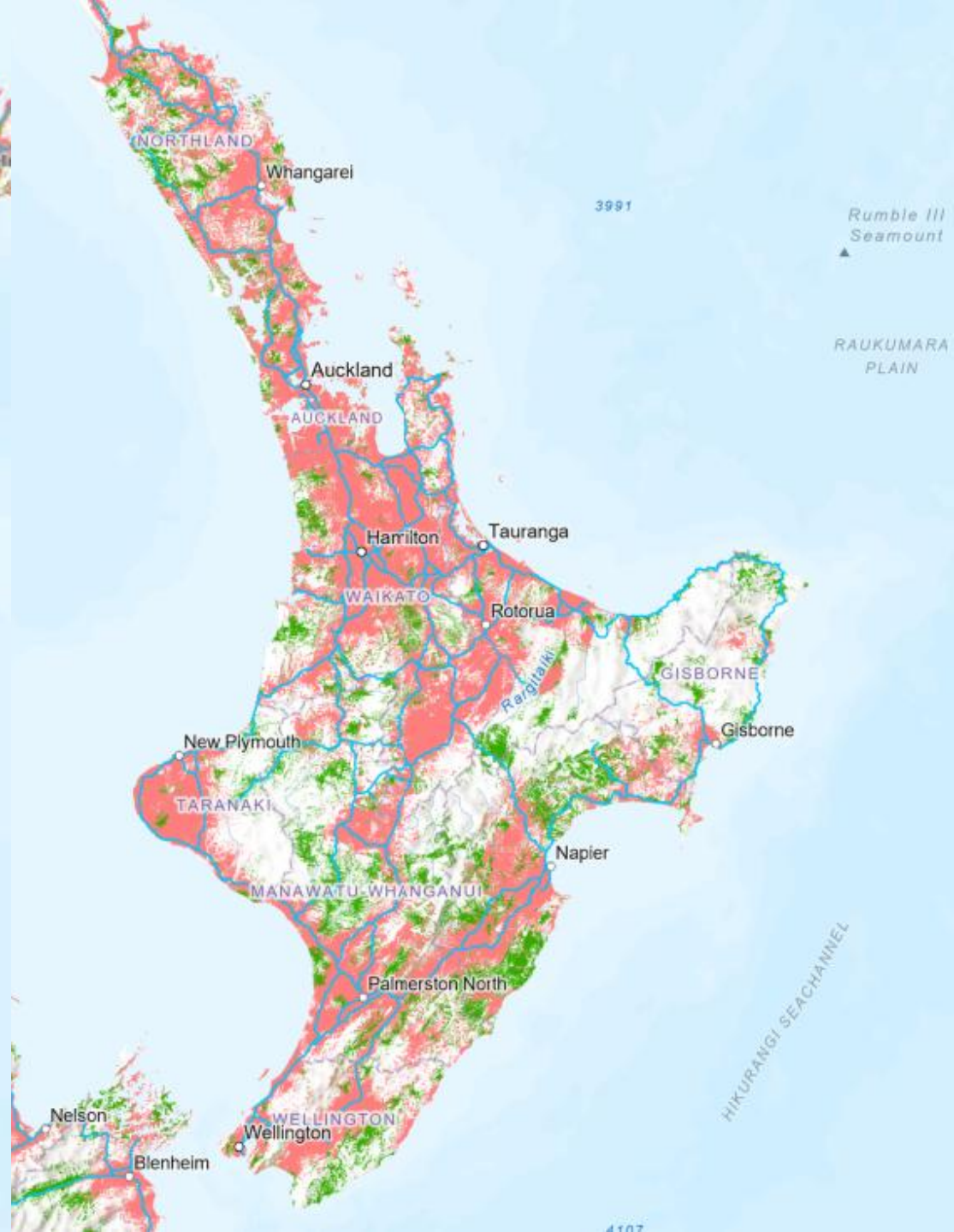
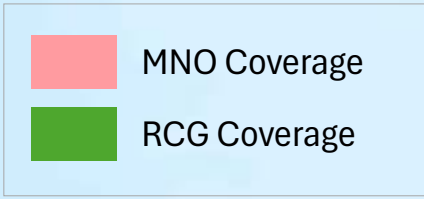
— NZ State Highways
— State Highway Blackspots



NZ State Highways Mobile Blackspots (current)



NZ Geographical Mobile Coverage



Social Impact and Benefits

- It's not about the sites
- It's about the people and the communities they serve





Social Impact and Benefits

- It's not about the sites
- It's about the people and the communities they serve



Infrastructure New Zealand – Building Nations Impact Awards



SOCIAL IMPACT AWARD

This award recognises projects which have delivered outstanding social outcomes through collaboration with Māori, stakeholders and communities. The approach to collaboration and the tangible outcomes achieved raises the bar in delivering best practice in improving social outcomes and serves as a model for future projects.

WINNER:

Rural Connectivity Group for RCG's Rural Connectivity Programme



BUILDING NATIONS 2025 - IMPACT AWARD WINNERS

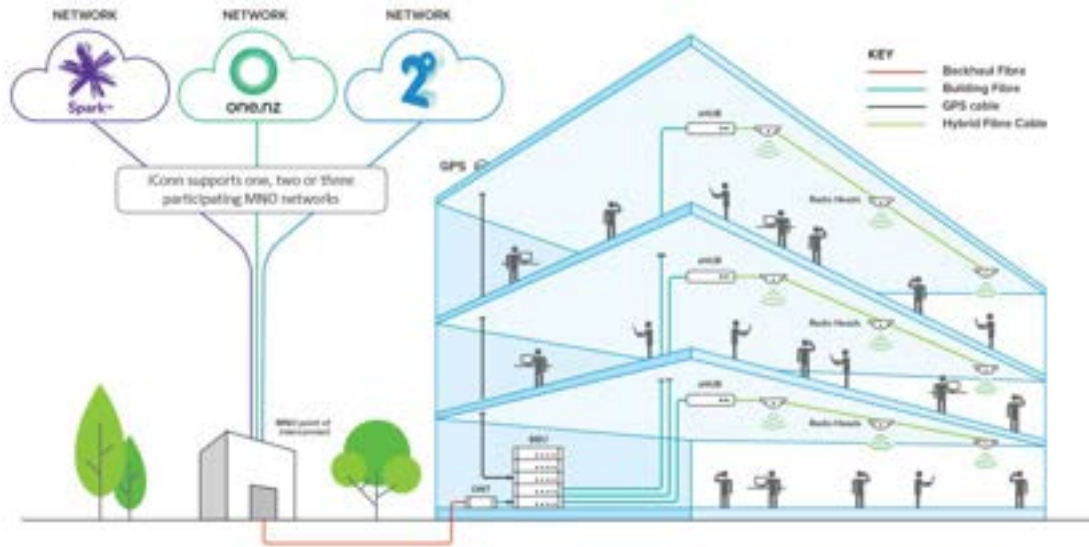
6 August 2025 | Tākina Events, Wellington



From Rural to In-building – Outside In

RCG's In-building Coverage solutions

- Shared RAN
- Active and Passive DAS



From Rural to In-building – Outside In

Customers want:

Simplicity and to work with one provider

All MNO coverage

RCG iConn, It just makes sense.....





Questions ?

Parekura Bay, Bay of Islands



Awakino, Waikato



Stony Bay, South Wairarapa



The Neck, Otago



Kaingaroa, Chatham Island



Lindis Pass, Otago



Mt Gore, West Coast



Lavericks, Canterbury



Rays Junction, Otago