

amazon Leo



# **Beyond Boundaries: Transforming Connectivity for Aotearoa's Critical Industries and Communities**

**Hamish Graham**  
**Partner Lead, Asia Pacific & Japan**  
**Amazon Leo Commercial Services**

# What is Amazon Leo?





Amazon Leo is Amazon's initiative to bring fast, reliable connectivity to consumers, businesses, and governments around the world

## Constellation details

---

3,200+

low Earth orbit  
satellites using  
Ka-band

---

260+

ground gateway  
sites globally

---

3

orbital shells  
(590km, 610km, 630km)  
Polar coming in 2028



# What makes Amazon Leo different?



Scalable high-performance

Fast, low-latency, and reliable global networking that **scales with your business**.



Secure by design

Connectivity when trust matters, designed and built from the ground up by Amazon using **advanced encryption standards**.



Enterprise-ready

Global tools, rapid deployment, 24/7 support, and guaranteed bandwidth: **your business-ready connectivity solution**.



Backed by Amazon

From a **customer-obsessed global Fortune 5 company** that is a proven global business partner to transform how you sell, operate, and grow.

Scalable high-performance

Secure by design

Enterprise-ready

Backed by Amazon



# Amazon Leo customer antennas

Designed and built to perform  
for businesses

	Pro	Nano	Ultra
<b>Size</b>	11" x 11" (28 cm x 28 cm)	7" x 7" (18 cm x 18 cm)	20" x 30" (51 cm x 76 cm)
<b>Weight</b>	5 lbs. (2.3 kg)	2.1 lbs. (1 kg)	39 lbs. (18 kg)
<b>Speeds</b>	400 Mbps DL	100 Mbps DL	1000 Mbps DL



# Robust ground gateway network

Points of Presence in 40+ countries at AWS Regions (37 options) and Edge PoPs (700+ options)

Rapid and secure data transit on AWS global fiber backbone

Redundant power to mitigate grid unreliability



Las Vegas, Production GGT



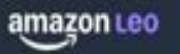
New Zealand, Production TTC

Scalable high-performance

Secure by design

Enterprise-ready

Backed by Amazon



Advanced encryption  
across the network,  
plus direct-to-cloud  
networking options



Scalable high-performance

Secure by design

Enterprise-ready

Backed by Amazon

amazon **LEO**

# Connect workloads to AWS

Flexible direct-to-cloud connectivity

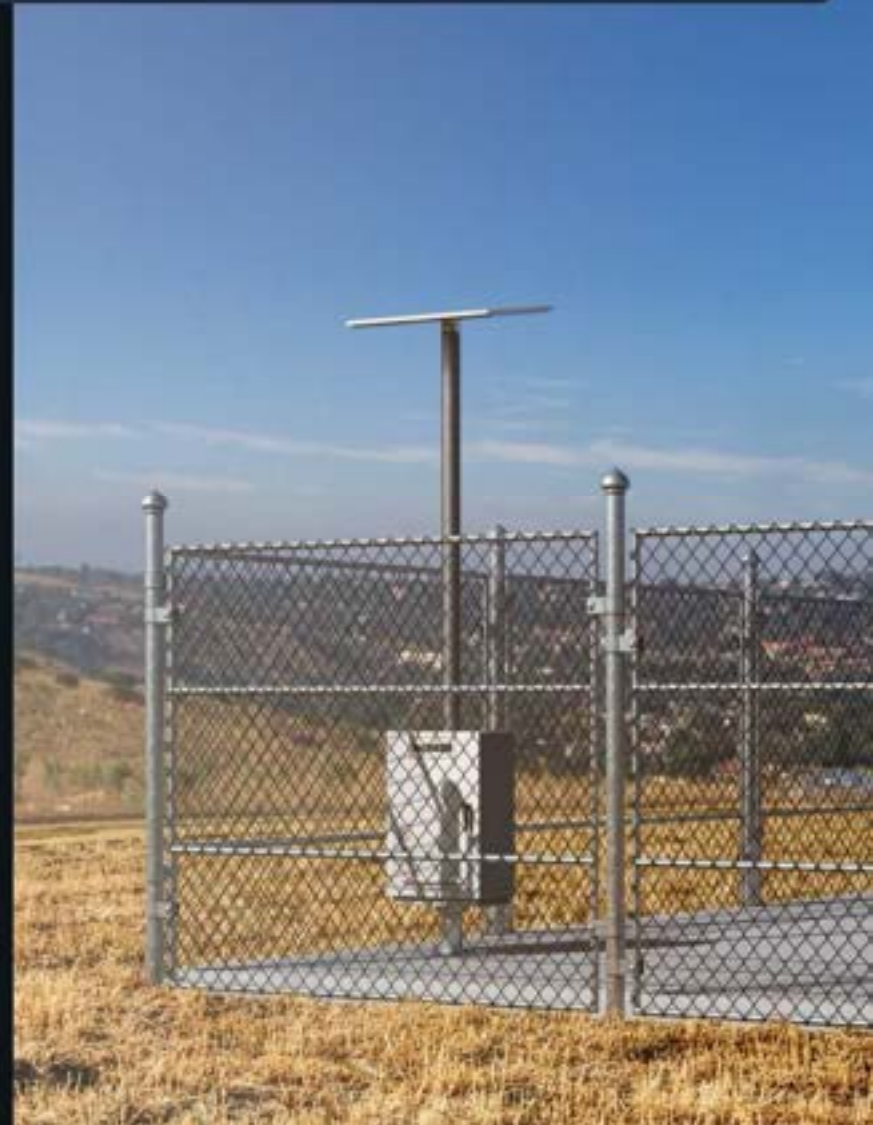
Easily connect directly to your AWS cloud resources **without traversing the public internet, no VPN required.**

Simplify critical applications

**Point-and-click orchestration** through a self-service management console.

Cloud-scale possibilities

Easy to deploy, orchestrate, and **scale your network across multiple sites** as your network and workload needs expand.



Scalable high-performance

Secure by design

Enterprise-ready

Backed by Amazon

amazon Leo



Global tools,  
rapid deployment,  
24/7 support, and  
guaranteed bandwidth:  
your business-ready  
connectivity solution

amazon Leo

Scalable high-performance

Secure by design

Enterprise-ready

Backed by Amazon

amazon **leo**

We're among great **company**

amazon

amazon prime

amazon alexa

amazon business

aws

amazon fire tv

prime video

amazon fresh

ZOOX

eero



# Today's connectivity needs



Rural connectivity and network modernization



Resilience, redundancy, emergency response, and rapid deployment



Multi-cloud and hybrid cloud management



Threat reduction via cybersecurity and surveillance



AI and data-intensive workloads at the edge



Connected assets and autonomous systems

# Designed for your unique scenarios



Backup connectivity



Cellular backhaul



Employee productivity



IoT & operational efficiency



Reach new customers



Unlock new innovation & revenue

# Agriculture & Forestry

# Designed for outdoor operations



## Agriculture

Connect remote fields and farm equipment for real-time monitoring and data-driven decisions.



## Forestry

Improve operations and safety with remote monitoring, early fire detection, and vehicle connectivity.



## Logging

Monitor equipment, track environmental impact, and streamline regulatory reporting in the field.

# Cover every acre, globally



## Precision farming

Monitor and optimize fields anywhere with real-time soil, crop, and livestock data, aerial surveys, automated tracking, and reliable backup connectivity.



## Worker safety & comms

Enable team connections anywhere with real-time hazard detection, remote equipment monitoring, and reliable communications across all work sites.



## Streamline reporting

Real-time reporting for remote operations with automated environmental monitoring and accessible permit compliance documentation for field teams anywhere.

# Retail

# Designed for retail needs



## POS backup

Ensure global business continuity, POS uptime, and customer data protection with reliable, high-speed, secure connectivity when landlines are down.



## Remote stores

Expand locations and reach new customers in unconnected regions with high-speed connectivity and flexible capacity options.



## Construction sites

Deploy instant connectivity to remote construction sites enabling seamless communication with HQ and accelerate time to market.

# Designed for retail needs



## Operational efficiency

Connect global operations with real-time data visibility across warehouses, stores, and delivery networks to power smarter business decisions.



## Customer experience

Increase customer loyalty with high-speed Wi-Fi, real-time digital signage, personalized messages, and curated entertainment, while enabling safety and security through CCTV monitoring shared to operations centers.



## Digital innovation

Transform business with lightning-fast data to automate app fulfillment, personalized offers, and collect opt-in customer data.

# Transportation & Logistics

# Keep your operations moving forward



## Enable fleet and asset management

Enhance operational efficiency with real-time monitoring across rural routes: fuel consumption tracking, predictive maintenance, optimized routing, and asset utilization.



## Enhance supply chain visibility

Track shipment locations and cargo conditions, monitor asset utilization across multi-modal networks, connect remote facilities, and provide end-to-end visibility.

# Construction

# Keep projects connected and on schedule



## Optimize site operations

Keep projects on-track with reliable connectivity: seamless HQ-to-site collaboration, real-time digital building plan updates, and efficient connected surveying.



## Remote machinery management

Maintain equipment reliability, efficiency, and safety with real-time remote operation, machine health monitoring, and location tracking capabilities.



## Enhance safety & security

Protect workers and assets across worksites with continuous security monitoring, emergency service access, and remote environmental hazard detection.

# Telecommunications

# Designed for telco needs



## Telecommunication backhaul

Expand network coverage footprint with high-speed cell site to network core connectivity delivering up to 1 Gbps download and 400 Mbps upload speeds.



## Remote and rural coverage

Deliver cellular service to underserved and hard-to-reach areas with cost-effective coverage solutions.



## Emergency services

Empower rapid-response teams worldwide with reliable high-speed connectivity for critical voice and data communications.

# Designed for telco needs



## Disruption avoidance

Strengthen network reliability and resilience with flexible backhaul connectivity plans.



## Event surge capacity

Deploy portable coverage of up to 300 Mbps up with high-speed backhaul, delivering flexible capacity where and when needed.



## IoT connectivity

Expand network coverage with low-latency edge computing and demand-based flexible capacity.

# Our reach will span small business and enterprises in **multiple industries**

Agriculture

Arts & Theatre & Museums

Automotive

Aviation

Construction

Educational Services

Finance & Insurance

Forestry & Fishing & Gaming

Healthcare & Medical

Hospitality

Live Events

Manufacturing

Maritime

Media & Entertainment

Mining & Quarrying

Natural Resources

Professional Services

Public Administration

Real Estate & Rental & Leasing

Retail & Wholesale

Scientific Services

Social Assistance & Non-Profit

Sports & Recreation

Technical Services

Telecommunications

Transportation

Logistics

Utilities & Energy

Warehousing



Thank you

